



U.S. Army Corps
of Engineers
Alaska District

ALASKA BASELINE EROSION ASSESSMENT

Erosion Information Paper - Ugashik, Alaska

Current as of January 2, 2008

Community Information

Ugashik (yoo-GASH-ick), population 17, is 16 miles up the Ugashik River from Pilot Point on the northwest coast of the Alaska Peninsula. The community is unincorporated and in the Lake and Peninsula Borough. The Ugashik River beach and river bank are used by pedestrians, boats, and vehicles.

Description of Erosion Problem

The Ugashik River is periodically eroded by storms, river flow fluctuations, ice jams, spring break up, pedestrian use, and vehicle use. Erosion areas along the river bank are indicated in the *Lake and Peninsula Borough Community Profile Map* for Ugashik. A *Community Profile* of Ugashik from 1984 indicates that flooding can be expected every 20-40 years, and that erosion is a continuous problem.

Two storms in 1974 caused erosion that endangered the main access road. Channel shifting in the Ugashik River left a community trail and some dwellings close to the river bank in the early 1980s.

Potential Damages

The potential for erosion damage does exist, but extent of potential damages have not been estimated. Further erosion can cause damage to the majority of residences, boats, and a boat launch area. No erosion protection measures have been taken. The community requested assistance from the Federal Emergency Management Agency after a storm in the fall of 2007.

Photos and Diagrams

Photos of the shoreline from the Ugashik community website are attached. Also, attached is a diagram depicting the approximate linear extent of potential erosion.

References

ESL. 1982. *Ugashik*, prepared by Environmental Services Limited.

Ugashik tribal council. *Ugashikvillage.com*

USACE. 1974. *Letter to Mr. Wm. H. Mayer*, Alaska District, U.S. Army Corps of Engineers.

USACE. 2007. *Alaska Community Erosion Survey*, OMB approved number 07100001, expires September 30, 2009 administered to Hattie Albecker, environmental coordinator, Ugashik tribal council on January 2, 2008.

Additional Information

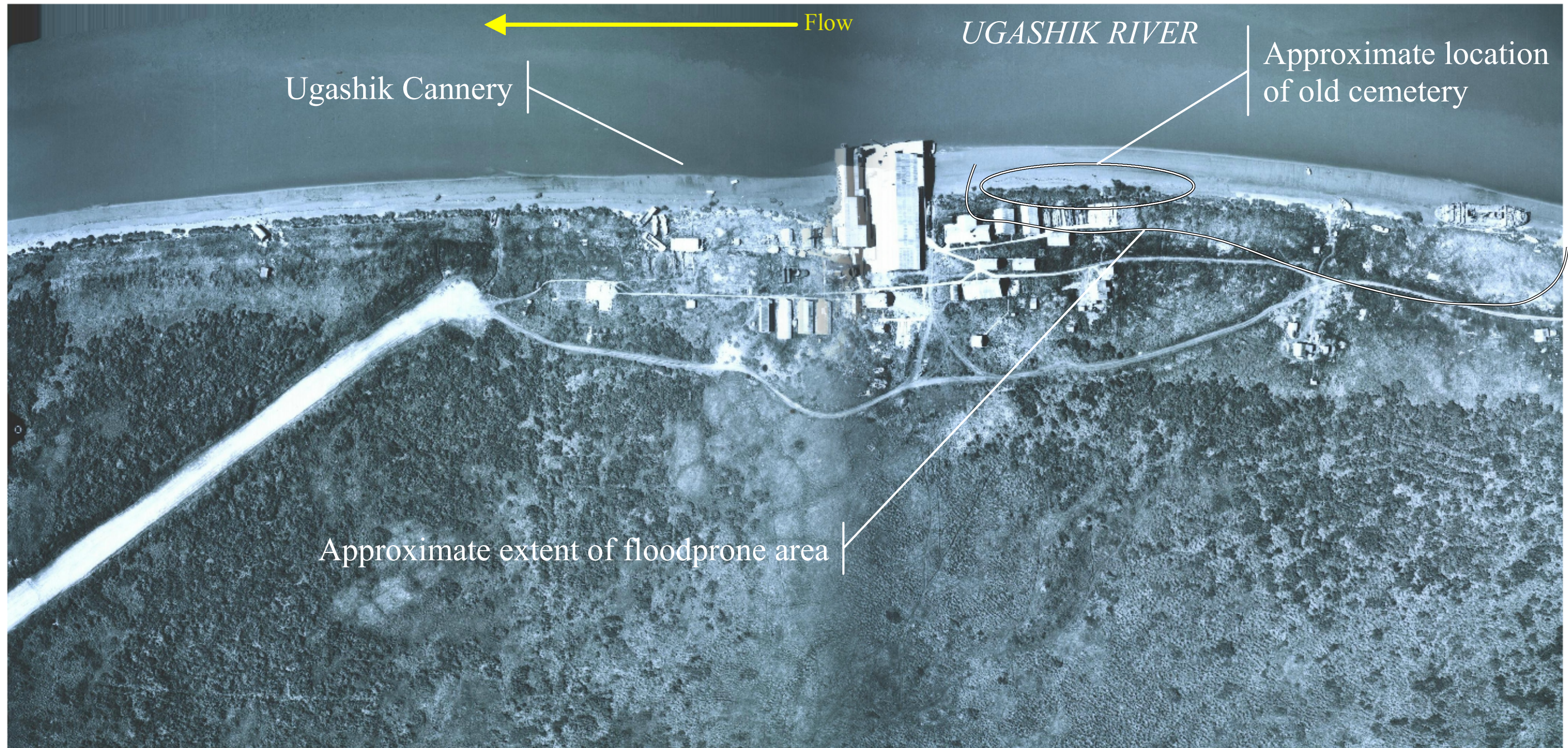
This information paper, as well as those for other communities, can be accessed on the internet at www.alaskaerosion.com. For more information please contact the Corps of Engineers, project manager at (907) 753-5694 or email Alaska.Erosion.POA@usace.army.mil



Photo 1: Ugashik River and Community of Ugashik, No photo date.



Photo 2: Ugashik River Shoreline, No photo date.

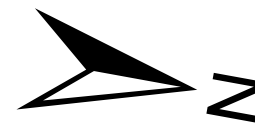


NOTE: The extent of erosion shown on this figure is based on interviews with the community. This data has not been field verified. This figure is only intended to show areas of erosion, not rates or severity of erosion



Alaska District
Corps of Engineers
Civil Works Branch

Linear Extent of Erosion
Part 1



Alaska Baseline Erosion
Ugashik, Alaska



NOTE: The extent of erosion shown on this figure is based on interviews with the community. This data has not been field verified. This figure is only intended to show areas of erosion, not rates or severity of erosion



Alaska District
Corps of Engineers
Civil Works Branch

--- Linear Extent of Erosion
Part 2



Alaska Baseline Erosion
Ugashik, Alaska